



HSC SERIES ROTARY SCREW AIR COMPRESSORS



STANDARD EQUIPMENT

High quality components such as IP55 electric motors with the IE3 efficiency class, IP54 fan motors, star delta motor starter system, electrical materials selected according to IEC, UL/cUL, CE standards as per the market requirements, high efficiency screw blocks consuming less energy are provided as standard in all our products.



SERVICEABILITY

Service friendly design implemented using a layout that provides instant access to all consumable items, with quick release protective covers and easy to use controllers minimizes downtime and reduces maintenance costs.



ELECTRONIC CONTROL

Hertz Kompressoren rotary screw compressors are equipped with easy-to-use, robust and long-lasting microprocessor controllers with communication capabilities as per the product line to ensure smooth operation and uninterrupted production.



SCREW BLOCK

- Patented and durable screw block that provides high-capacity of air, and that is specially selected for each model's capacity requirement
- Production of air with high volumetric efficiency, thanks to the new rotor profiles, and lower torque requirements
- New generation bearing design with increased load carrying capabilities



AIR OIL SEPARATOR

Separador tipo sumersión

Immersed type separator

High performance separation with three-stage design

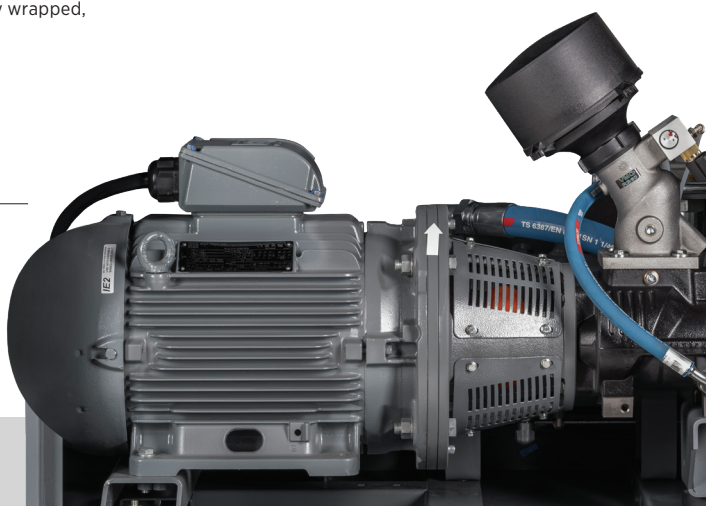
More efficient separation at lower volume with deeply wrapped, intertwined separation layers

Low amount of oil mist in outlet air ≤ 3 ppm



MAIN MOTOR AND DRIVE SYSTEM

High efficiency 400V/3 phase/50Hz, IE3 IP55 electric motors with F Class insulation
Star delta motor starting system
Easy of assembly and disassembly with bush pulleys on belt-pulley models





HSC SERIES Rotary Screw Air Compressors

HERTZ HSC Series compressors are reliable compressors which may be easily used in many applications. Manufactured with highperformance and high-quality equipment, these compressors can be easily used by anyone with a level of experience.

Proven design and reliability with tens of thousands of compressors used in the field

MAIN MOTOR DRIVE SYSTEM

Belt-pulley drive system
Serviceability thanks to easy belt tensioning system
TEFC, premium efficiency electric motor



AIR/OIL SEPARATOR

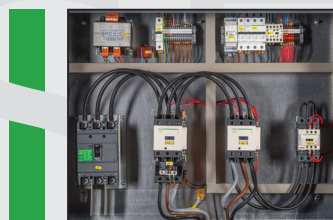
- High performance separation with three-stage design
- More efficient separation at lower volume with deeply wrapped, intertwined separation layers
- Low amount of oil mist in outlet air ≤ 3 ppm

COOLING SYSTEM

- Quiet and efficient axial fan
- Temperature-controlled fan motor

COMPONENTS

- High-quality components with a long service life.



TECHNICAL DATA

Model	Pressure		Capacity*		Motor Power	Connection Size	Dimensions (mm)			Weight	Noise**
	bar	Psi	m³/min	cfm			Width	Depth	Height	kg	dB(A)
HSC 45	7,5 10 13	110 145 190	7,2 6,4 5,4	254 226 191	45/60	G 1 1/4"	1575	1030	1750	876	75
HSC 55	7,5 10 13	110 145 190	9,6 8,5 6,6	339 300 233	55/75	G 1 1/2"	2000	1200	1810	1340	76
HSC 75	7,5 10 13	110 145 190	12,4 10,5 8,7	438 371 307	75/100	G 1 1/2"	2000	1200	1810	1610	78
HSC 90	7,5 10 13	110 145 190	15,8 13,5 11,0	557 477 388	90/125	G 2"	2500	1400	2037	2240	79
HSC 110	7,5 10 13	110 145 190	18,8 16,5 14,0	664 583 495	110/150	G 2"	2500	1400	2037	2500	79
HSC 132	7,5 10 13	110 145 190	22,8 19,5 16,0	805 689 565	132/180	G 2 1/2"	2500	1805	2000	2873	79
HSC 160	7,5 10 13	110 145 190	27,4 23,0 19,5	968 812 689	160/220	G 2 1/2"	2500	1805	2000	3030	79

- Unit performances measured in reference conditions which are 1 bar absolute air Pressure, %0 relative humidity, 20°C inlet air temperature, 71°C thermostatic valve set temperature and use of Smartoil.
- HERTZ KOMPRESSOREN reserves its rights to make changes in its products and specifications without prior notice.
- * Refers to free air delivery measured according to ISO 1217:2009, Annex C standard.
- ** Refers to sound Pressure level measured according to ISO 2151:2004 and ISO 9614/2 with ± 3 dB(A) tolerance.

