



## PET MASTER OIL-FREE RECIPROCATING COMPRESSORS



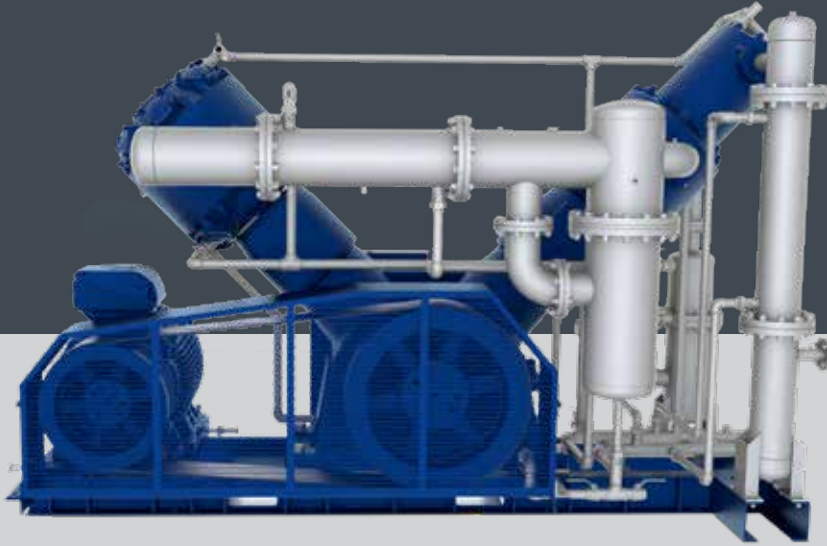
### STANDARD EQUIPMENT

High quality components such as IP55 electric motors with the IE3 efficiency class, star-delta motor starter system, electrical materials selected according to IEC, UL/cUL, CE standards as per the market requirements, durable compressor blocks are provided as standard in all our products.



### ADVANTAGES

HERTZ PET MASTER Series are reliable and high performance oil free reciprocating air compressors used in the pet bottling, food and health industries. Pet Master Compressors provide 100% oil-free pressurized air as no oil is used in the compression chamber. They operate between 16 and 40 Bar. As they have an integrated structure, they occupy less space and provide ease of installation.



## MAIN MOTOR AND DRIVE SYSTEM

- High efficiency 400V/3 phase/50Hz IE3 IP55 electric motor
- Special loadless start system and automatic discharge system for loadless start



## CONTROLLER\*

- Advanced, high-definition, userfriendly 7" color touchscreen
- High speed, industrial type PLC infrastructure with robust construction
- Encrypted Access Protection system with various levels of authorization.
- Display of relevant data on the screen clearly, trend graph recording and active monitoring
- Alarm History Record for the last 100 alarms
- Ethernet / ModBus communication functions as standard
- Remote monitoring and control feature /
- Compliance with GSM, internet and Industry 4.0
- Flexible programmable/expandable Input /Output structure



\*Only on Pet Plus and Wave reciprocating models with high pressure



## PET MASTER

### Oil-Free Reciprocating Compressors

HERTZ PET MASTER Series are reliable and high performance oil free reciprocating air compressors used in the pet bottle blowing, food and health industries.

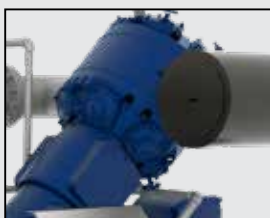
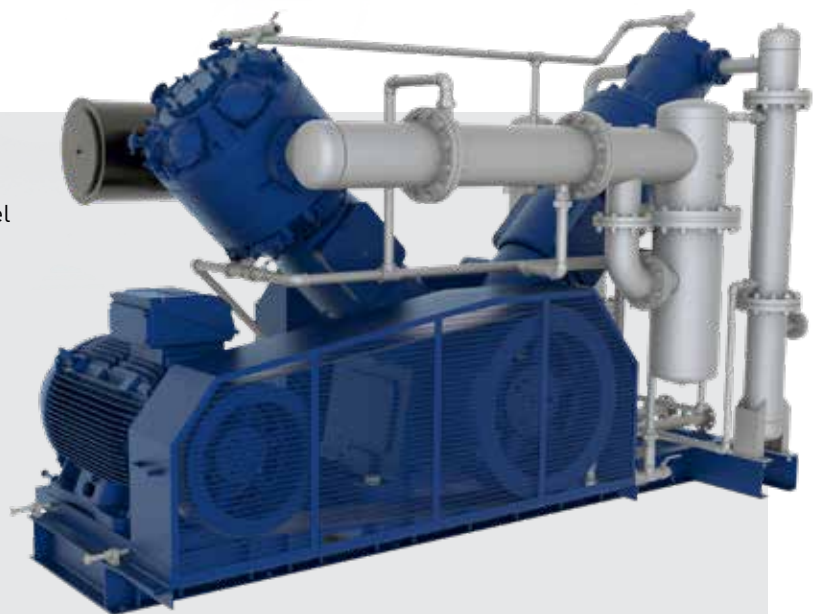
#### ADVANTAGES

- Pet Master Compressors provide 100% oil-free pressurized air as no oil is used in the compression chamber.
- They operate between 16 and 40 Bar. As they have an integrated structure, they occupy less space and provide ease of installation and installation.



#### GENERAL SPECIFICATION

- For intercoolers and aftercoolers, stainless steel pipe is used which is more efficient in terms of heat transfer and more resistant to corrosion.
- The structure of the coolers is designed to transfer air through the pipe and water through the body wall. Thanks to their compact design, pipe-type coolers are easy-to-maintain and their cooling efficiency is high.
- Compressor provides energy saving by operating with Load / Unload control system within maximum and minimum pressure set values determined according to system requirements.
- The integrated electrical system provides user-friendly operation.



## CONTROLLER

- Advanced, high-definition, user friendly 7" color touchscreen
- High speed, industrial type PLC infrastructure with robust construction
- Encrypted Access Protection system with various levels of authorization.
- Display of relevant data on the screen clearly, trend graph recording and active monitoring
- Alarm History Record for the last 100 alarms
- Ethernet / ModBus communication functions as standard
- Remote monitoring and control feature / Compliance with GSM, internet and Industry 4.0
- Flexible programmable/expandable Input /Output structure



## TECHNICAL DATA

Model	Pressure		Capacity		Motor Power kW/HP	Connection Size	Dimensions (mm)			Weight kg
	bar	psi	m³/min	cfm			Length	Width	Height	
PET MASTER 50	40	580	3,6	127	37/50	G 1 1/4"	3647	1669	2395	5500
PET MASTER 75	40	580	5,5	194	55/75	G 1 1/4"	3647	1669	2395	5500
PET MASTER 100	40	580	7,4	261	75/100	G 1 1/4"	3673	1744	2470	6500
PET MASTER 125	40	580	9,10	321	90/125	G 1 1/4"	3673	1744	2470	6500
PET MASTER 150	40	580	11,6	410	110/150	G 2"	4192	1977	2814	7500
PET MASTER 180	40	580	13,5	477	132/180	G 2"	4192	1977	2814	7500
PET MASTER 220	40	580	16,4	579	160/220	G 2"	4192	1977	2814	7800
PET MASTER 270	40	580	21,3	752	200/270	G 2"	4234	2203	2841	9200
PET MASTER 300	40	580	23,0	812	220/300	G 2"	4234	2203	2841	9200

Model	Pressure		Capacity				Motor Power	Connection Size	Dimensions (mm)			Weight
			Minimum		Maximum				Length	Width	Height	
	bar	psi	m³/min	cfm	m³/min	cfm	kW/HP					kg
PET MASTER 75 VSD	40	580	4,1	145	5,5	194	55/75	G 1 1/4"	3533	1811	2403	5600
PET MASTER 125 VSD	40	580	6,8	240	9,10	321	90/125	G 1 1/4"	3550	1812	2431	6650
PET MASTER 180 VSD	40	580	10,1	357	13,5	477	132/180	G 2"	4168	1975	2814	7750
PET MASTER 220 VSD	40	580	12,3	434	16,4	579	160/220	G 2"	4168	1975	2814	8000
PET MASTER 300 VSD	40	580	17,3	611	23,0	812	220/300	G 2"	4223	2212	2840	9500

- HERTZ KOMPRESSOREN reserves its rights to make changes in its products and specifications without prior notice.

**hertz**  
KOMPRESSOREN

### HERTZ KOMPRESSOREN GLOBAL

export@hertz-kompressoren.com  
www.hertz-kompressoren.com

### HERTZ KOMPRESSOREN GmbH

Kronacher Str. 60, 96052 Bamberg  
Phone: +49 951 96 43 13 88 Fax: +49 951 96 43 13 50  
info@hertz-kompressoren.de

### HERTZ KOMPRESSOREN USA Inc.

3320 Service St. Charlotte, NC 28206 USA  
Phone : +1-704-579-5900 Fax : +1-704-579-5997  
info@hertz-kompressoren.us